

THIS INSTRUMENT PREPARED BY
DAVID P. LINDLEY
OF
CAULFIELD and WHEELER, INC.
SURVEYORS - ENGINEERS - PLANNERS
7900 GLADES ROAD, SUITE 100
BOCA RATON, FLORIDA 33434 - (561)392-1991

DAZCO CENTER

A REPLAT OF A PORTION OF THE AMENDED PLAT OF SEC. 12 TWP. 45 S. R.42E. MARY A. LYMAN ET AL, ACCORDING TO THE PLAT THEREOF, AS RECORDED IN PLAT BOOK 9, PAGE 74 OF THE PUBLIC RECORDS OF PALM BEACH COUNTY, FLORIDA, BEING A PORTION OF SECTION 12, TOWNSHIP 45 SOUTH, RANGE 42 EAST, PALM BEACH COUNTY, FLORIDA.

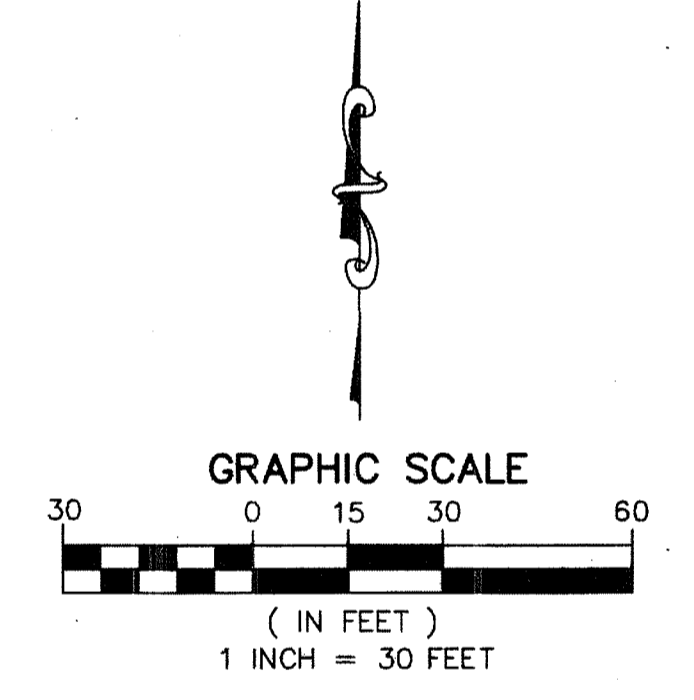
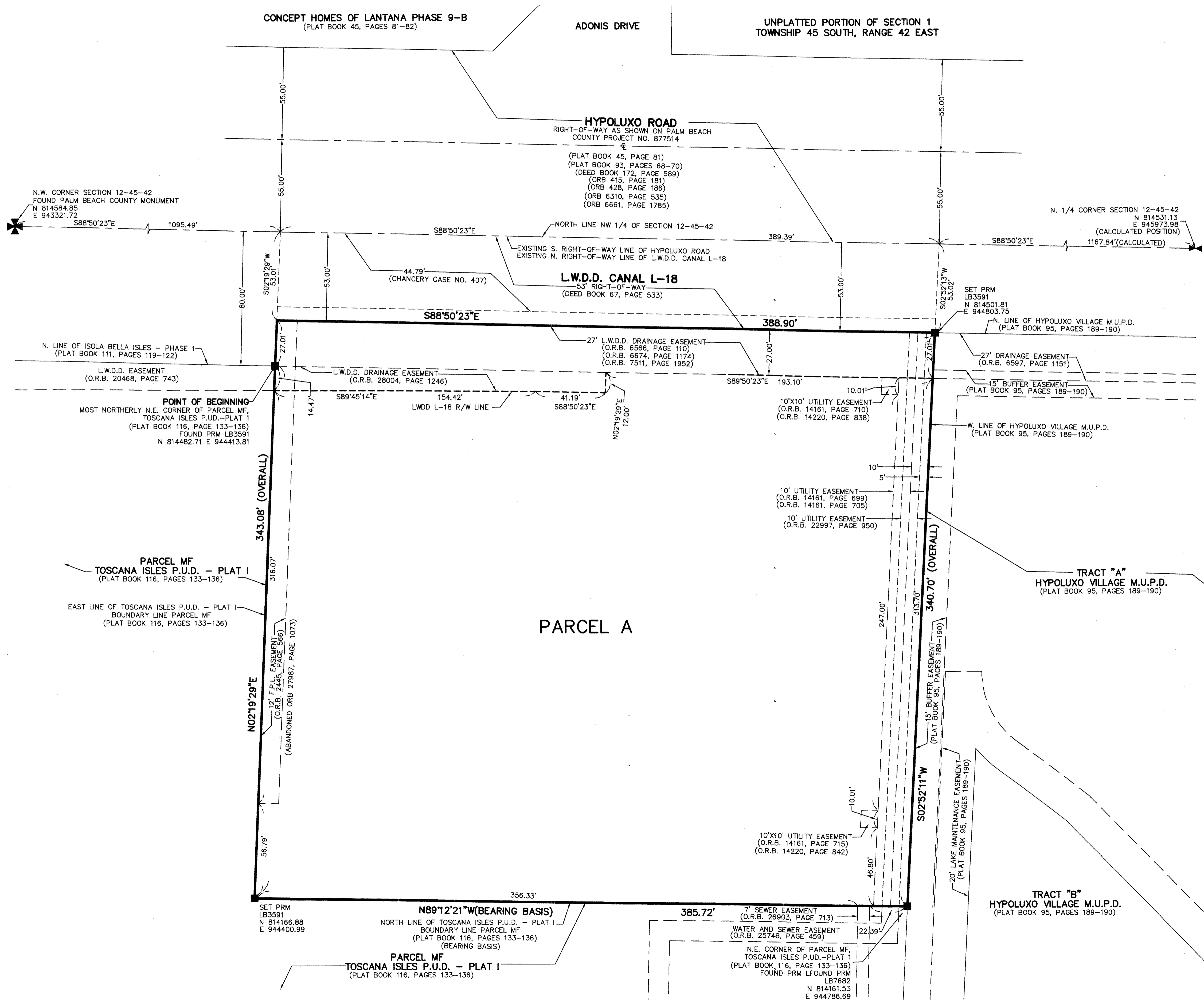
53

STATE OF FLORIDA
COUNTY OF PALM BEACH
THIS PLAT WAS FILED FOR
RECORD AT _____ M.
THIS _____ DAY OF _____
A.D. 201____ AND DULY RECORDED
IN PLAT BOOK _____ ON
PAGES _____ AND _____

SHARON R. BOCK
CLERK AND COMPTROLLER

BY: _____
DEPUTY CLERK

SHEET 2 OF 2



NOTES
COORDINATES, BEARINGS AND DISTANCES
 COORDINATES SHOWN ARE GRID
 DATUM = NAD 83 1990 ADJUSTMENT
 ZONE = FLORIDA EAST
 LINEAR UNIT = US SURVEY FEET
 COORDINATE SYSTEM 1983 STATE PLANE
 TRANSVERSE MERCATOR PROJECTION
 ALL DISTANCES ARE GROUND
 SCALE FACTOR = 1.0000366
 GROUND DISTANCE X SCALE FACTOR = GRID DISTANCE
 BEARINGS AS SHOWN HEREON ARE GRID DATUM,
 NAD 83 1990 ADJUSTMENT, FLORIDA EAST ZONE.

LEGEND/ABBREVIATIONS

- CL - CENTERLINE
- DE - DRAINAGE EASEMENT
- E - EASTING
- FPL - FLORIDA POWER & LIGHT CO.
- LB - LICENSED BUSINESS
- L.W.D.D. - LAKE WORTH DRAINAGE DISTRICT
- N - NORTHING
- RW - RIGHT-OF-WAY
- O.R.B. - OFFICIAL RECORD BOOK
- UE - UTILITY EASEMENT
- PRM - DENOTES PERMANENT REFERENCE MONUMENT
 4" x 4" x 24" CONCRETE MONUMENT WITH
 ALUMINUM DISK STAMPED "C&W PRM LB3591"
 UNLESS NOTED OTHERWISE